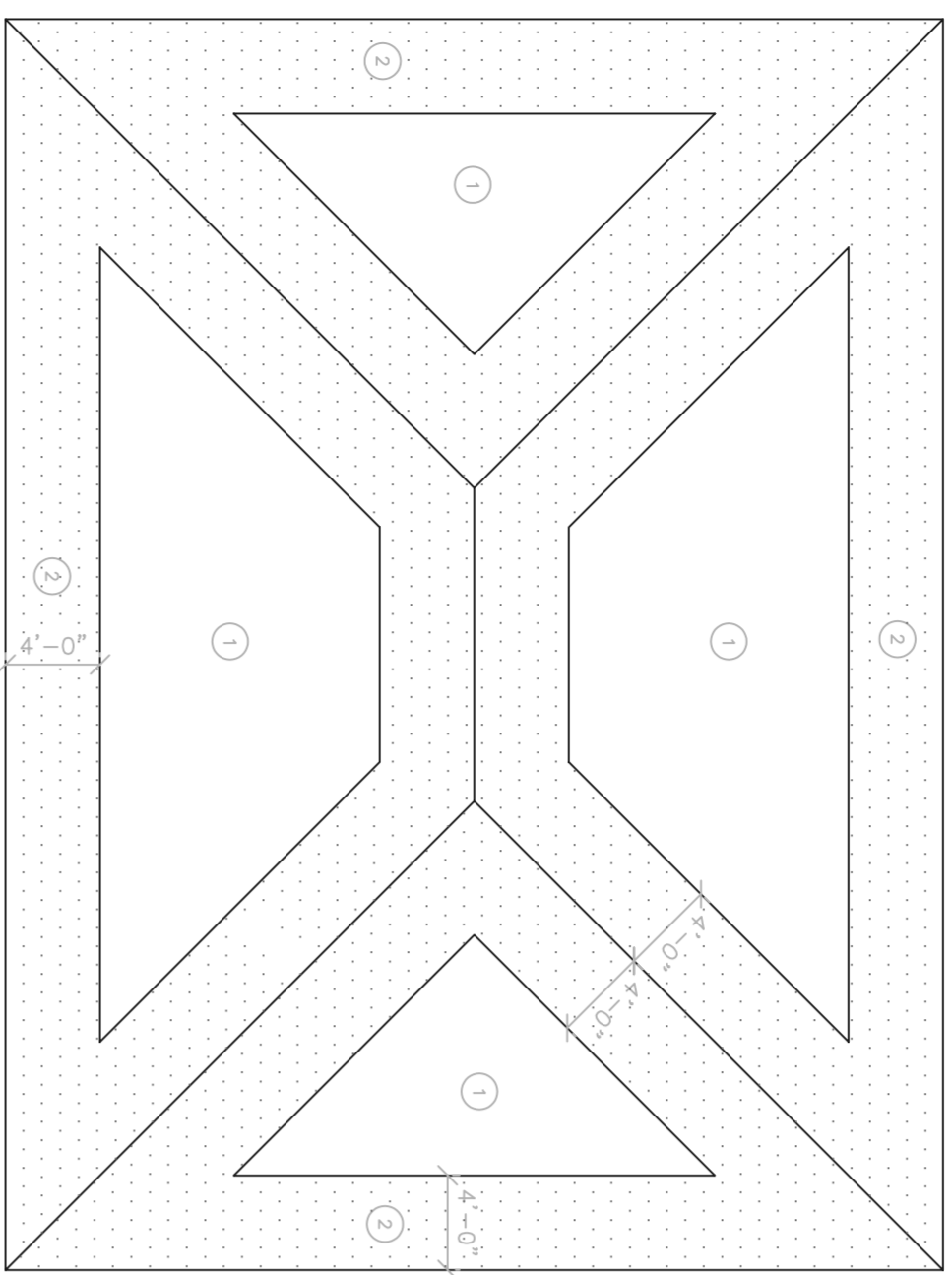


PROVIDE ANCHOR STRAP FROM TABLE BELOW AT EACH BEARING POINT FOR EACH WOOD TRUSS AND EACH BEARING POINT ADJACENT TO RESIST UPLIFT AS SPECIFIED BY THE WOOD TRUSS MANUFACTURER.

"SIMPSON" TRUSS TIE DOWN (U.N.O.)					
MARK	ANCHOR TYPE	NAIS TO TRUSS	NAIS / SPOKES TO SEAT	BOIS UPLIFT	ALLOWABLE UPLIFT
①	SIMPSON HETA20	15-104 x 1 1/2"	EMBED	-	180 #
②	SIMPSON TS-18	14-164 x 1 1/2"	-	-	90 #
					415 #

NOTES:  
1. (1) - ONE STRAP @ EACH SIDE OF GIRDER

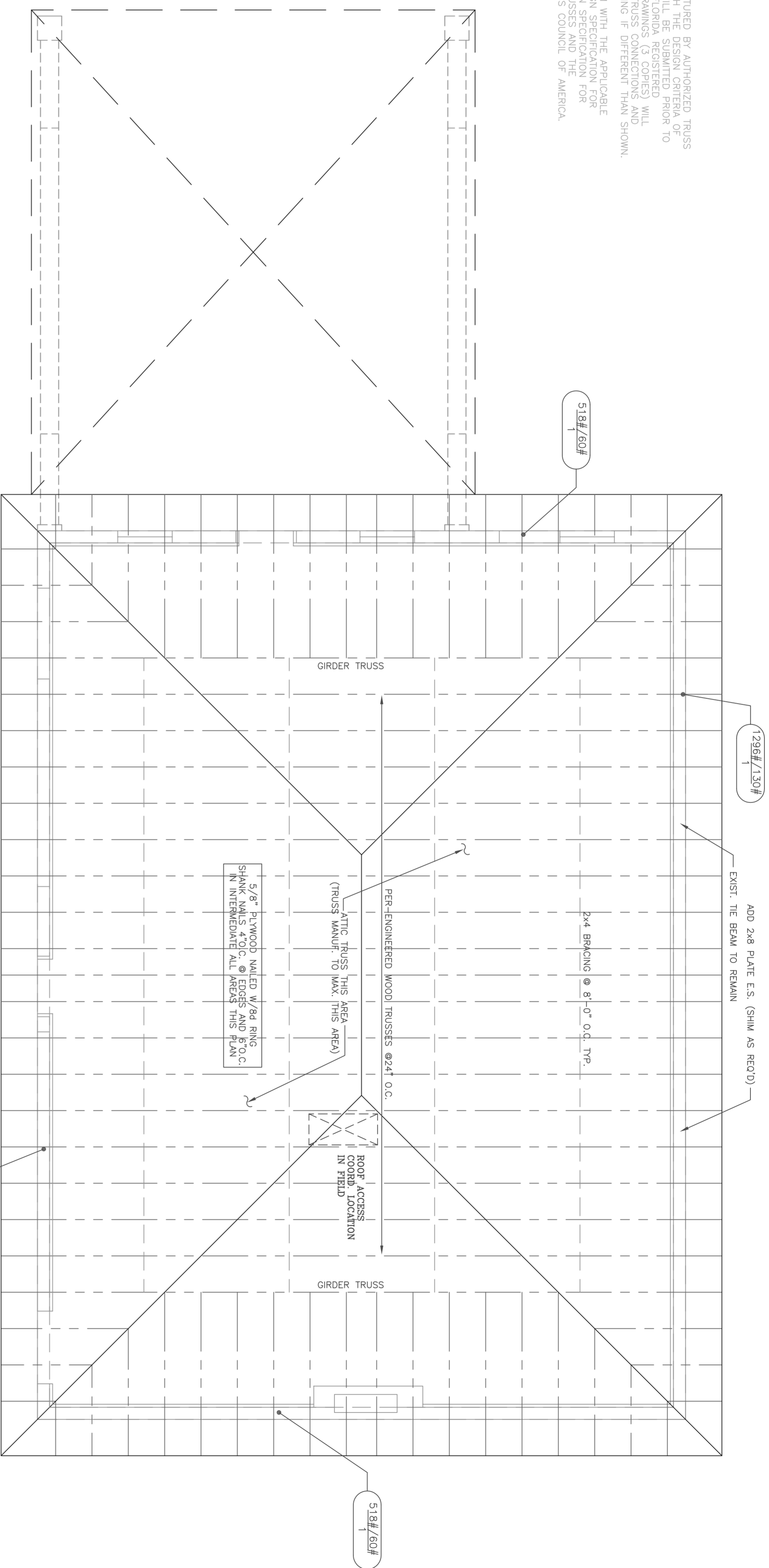


**NAILING ZONE SPECIFICATIONS:**

- ① INTERIOR ZONE: #8d @ 6" O.C. MAX.
- ② EDGE & RIDGE ZONE: #8d @ 4" O.C. MAX.

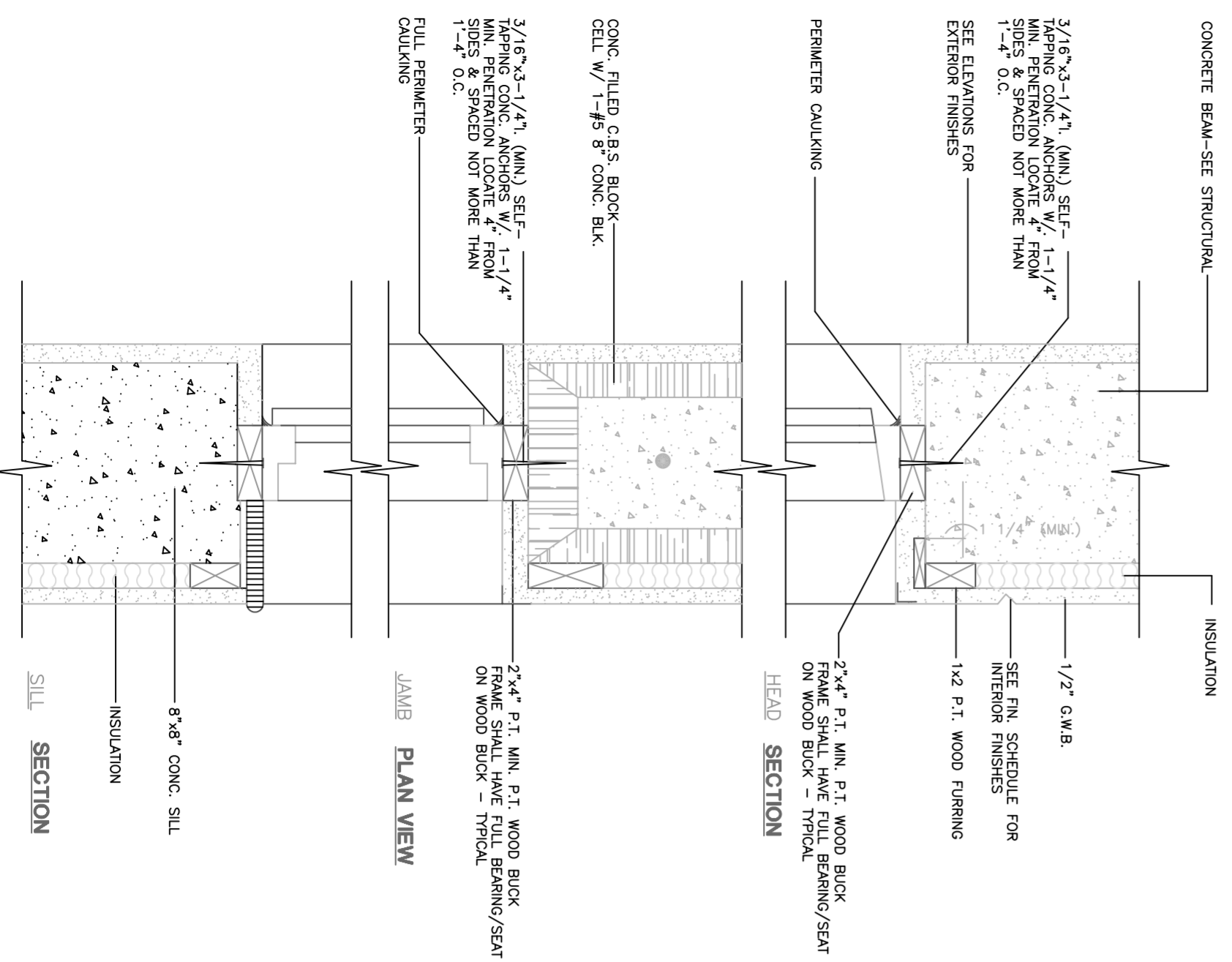
NOTE: NAIS SHALL BE HAND DRIVEN OR POWER DRIVEN #8d RINK SHANK NAIS (0.1319" x 2 1/2" LONG WITH 0.281"

**WOOD TRUSSES**  
WOOD TRUSSES SHALL BE MANUFACTURED BY AUTHORIZED TRUSS MANUFACTURER. SHOP DRAWINGS SHALL BE SUBMITTED PRIOR TO FABRICATION WITH THE SEAL OF A FLORIDA REGISTERED PROFESSIONAL ENGINEER. SHOP DRAWINGS (3 COPIES) WILL SHOW ALL BEARING CONNECTIONS, TRUSS CONNECTIONS AND LOCATION OF ALL FEMURAN BRACING IF DIFFERENT THAN SHOWN. DESIGN STANDARDS SHALL CONFORM WITH THE APPLICABLE PROVISIONS OF THE NATIONAL DESIGN SPECIFICATION FOR WOOD CONSTRUCTION AND THE NATIONAL DESIGN SPECIFICATION FOR METAL PLATE CONNECTED WOOD TRUSSES AND THE SPECIFICATIONS OF THE WOOD TRUSS COUNCIL OF AMERICA.



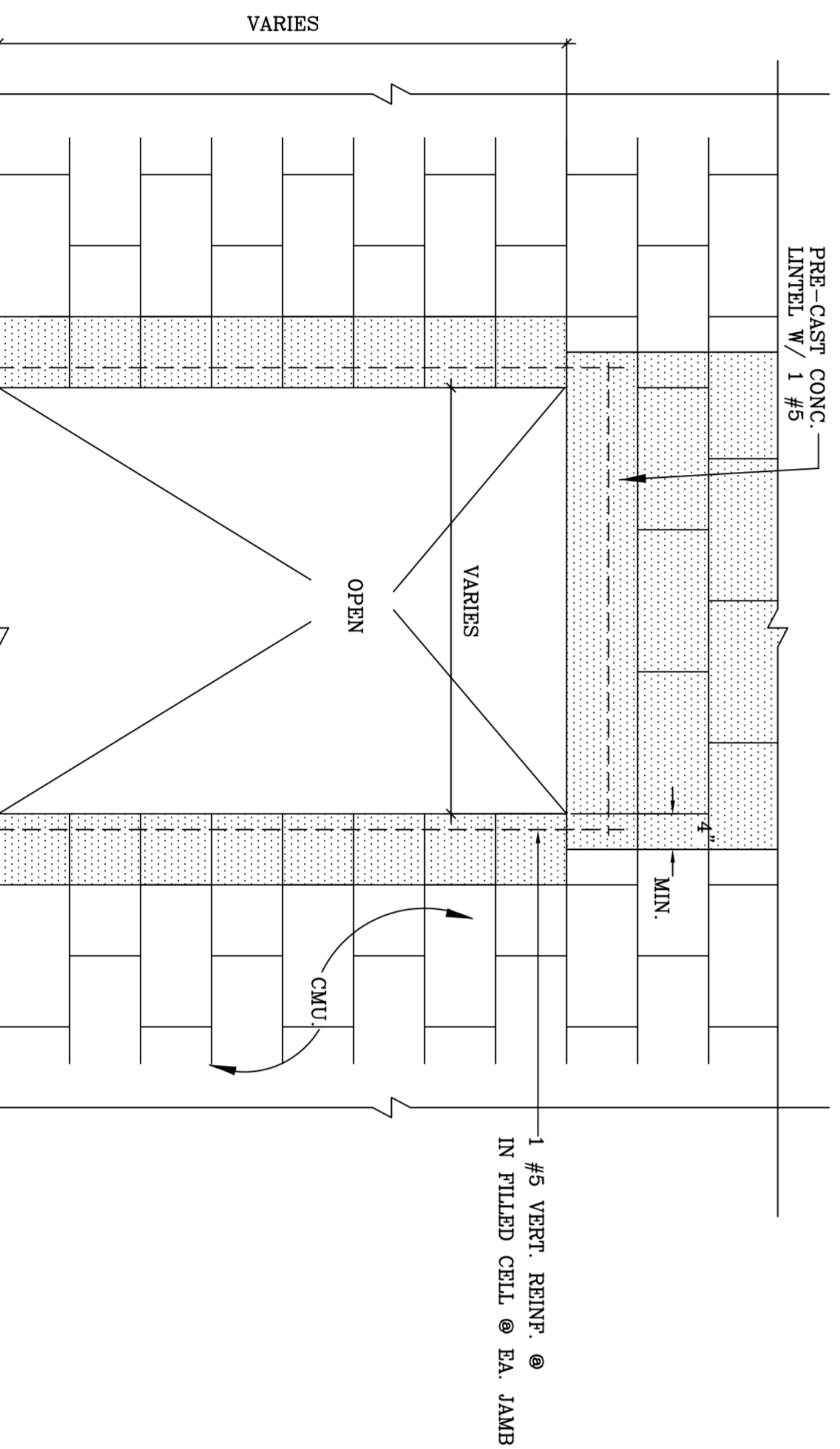
**ROOF FRAMING PLAN**

SCALE: 1/4"=1'-0"



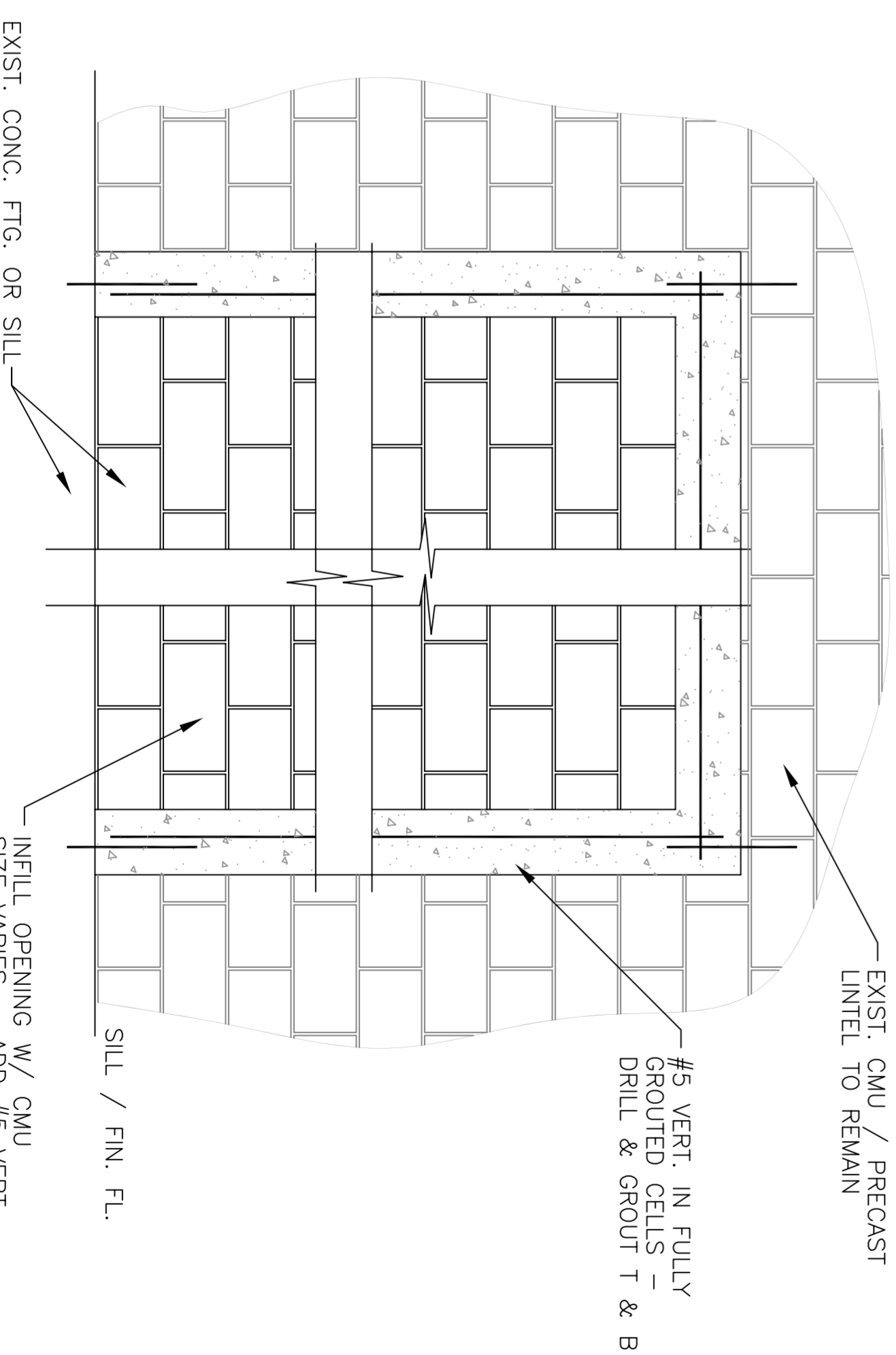
**WINDOW BUCK DETAILS**

N.T.S.



**DOOR / WINDOW OPENING DETAIL**

3/4"=1'-0"



**BLOCK INFILL DETAIL**

3/4"=1'-0"

**REVISIONS:**

NO.	DATE	DESCRIPTION